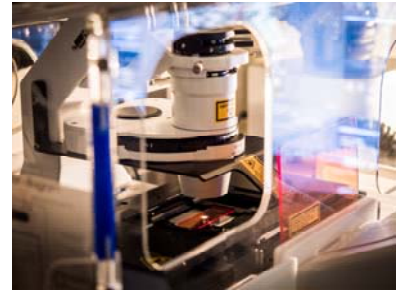


**Manufacturer**  
 Zeiss

**Model**  
 LSM 800



## Confocal microscope



### Confocal imaging

The LSM 800 is a confocal laser scanning microscope, equipped with different colors of lasers, a highly sensitive PTM Multi Alkali detector technology and a fast-linear scanning for high resolution imaging. It has multiple applications in biology, medicine and materials.

It allows:

- Fluorescence imaging
- Confocal imaging
- Differential Interference Contrast (DIC) imaging
- Brightfield imaging

### Technical specifications:

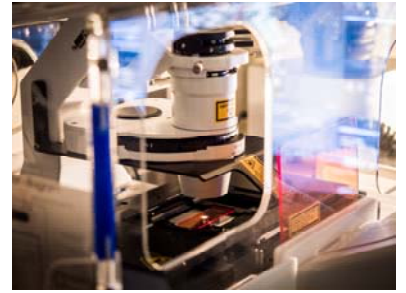
- Diode lasers:
  - Diode laser (405 nm, 5 mW); laser class 3B
  - Diode laser (488 nm, 10 mW); laser class 3B
  - Diode laser (561 nm, 10 mW); laser class 3B
  - Diode laser (640 nm, 5 mW); laser class 3B
- Fluorescence filter sets:
  - Filter set 38 endow GFP
  - Filter set 43 Cy3
  - Filter set 49 DAPI
  - Filter set 50 Cy5
- Plan-Apochromatic objectives:
  - 5x / 0.16 M27
  - 10x / 0.3 M27
  - 20x / 0.8 M27
  - 40x / 1.3 Oil DIC M27 y 40x of water and glycerol
  - 63x / 1.4 Oil DIC M27
  - 100x / 1.4 Oil DIC M27
- Microscope inverted stand: Axio Observer 7

[www.ibeccbarcelona.eu/corefacilities](http://www.ibeccbarcelona.eu/corefacilities)

[microscopy@ibeccbarcelona.eu](mailto:microscopy@ibeccbarcelona.eu)

**Manufacturer**  
Zeiss

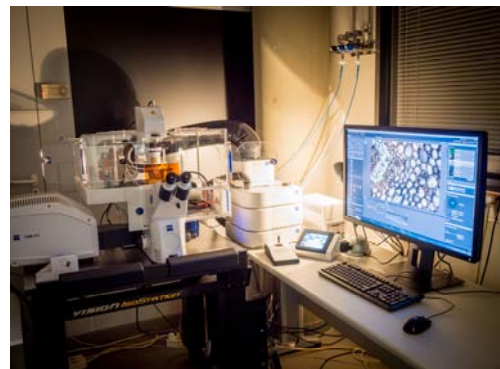
**Model**  
LSM 800



## Confocal microscope

### Technical specifications:

- Optical resolution:
  - 120 nm in XY
  - 350 nm in Z
- Color Camera. AxioCam 503c with:
  - 2.8 Mega pixels
  - Refresh rate: 38 images / second and 90 images /second with binning
- Detectors : Two PTM Multi Alkali detectors of high sensitivity
- Incubation system: for cell cultures with optimal temperature conditions and CO<sub>2</sub>/O<sub>2</sub> control system.  
Heating Inserts:
  - P S1 for:
    - Microscope slides
    - POC-R2
    - POCmini-2
    - 60 Petry dishes (ϕ 52-58 mm)
    - 35 Petry dishes (ϕ 35-38 mm) with ring adapter
  - P Labtek S for:
    - Lab-Tek (Nunc)
    - Chambered slides (BD Falcon)
    - 60 Petry dishes (ϕ 52-58 mm)
    - 35 Petry dishes (ϕ 35-38 mm) with ring adapter
- Software acquisition: ZEN 2.3 (blue edition) imaging software



[www.ibeccbarcelona.eu/corefacilities](http://www.ibeccbarcelona.eu/corefacilities)

[microscopy@ibeccbarcelona.eu](mailto:microscopy@ibeccbarcelona.eu)