

# The right bin for the right waste



**HARD PLASTIC BINS**

- Tip holders
- Tip boxes
- Bottle taps



**BATTERY BIN**

- Batteries



**TONER BIN**

- Printer toner



**ORGANIC BIN**

- Organic waste



**MOBILE PHONES AND TABLETS**



**POREXPAN COLLECTION POINTS**



**COLD BLOCKS COLLECTION POINTS**

# The right bin for the right waste



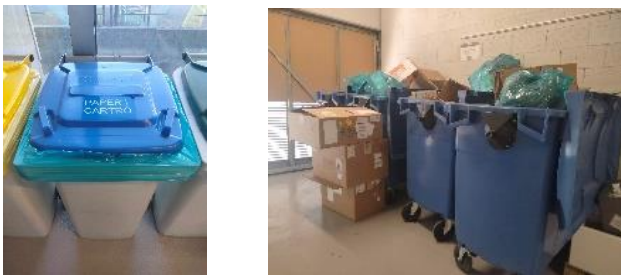
## CLEAN PLASTIC BINS

- Bags
- Plastic packaging (bubbles)
- Not-used plastic material
- Tips that touched non-hazardous material
- Clean aluminum
- Rinsed no-hazardous plastic bottles
- Film



## GENERAL BIN

- Parafilm
- Tape
- Tissues
- Plastic file folders
- Used bench cover paper
- Hands paper
- Globes



## PAPER BIN

- Gloves' boxes
- Clean paper
- Magazines and Newspapers

! not hand paper or tissues



## GLASS BIN

- Contaminated glass

! Take clean glass to the glass recycling bins outside the PCB