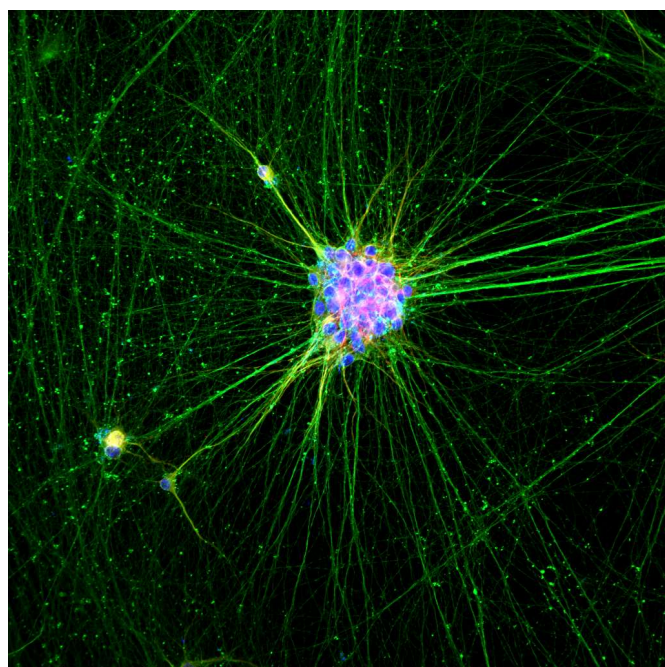


Confocal & SEM Combined Studies

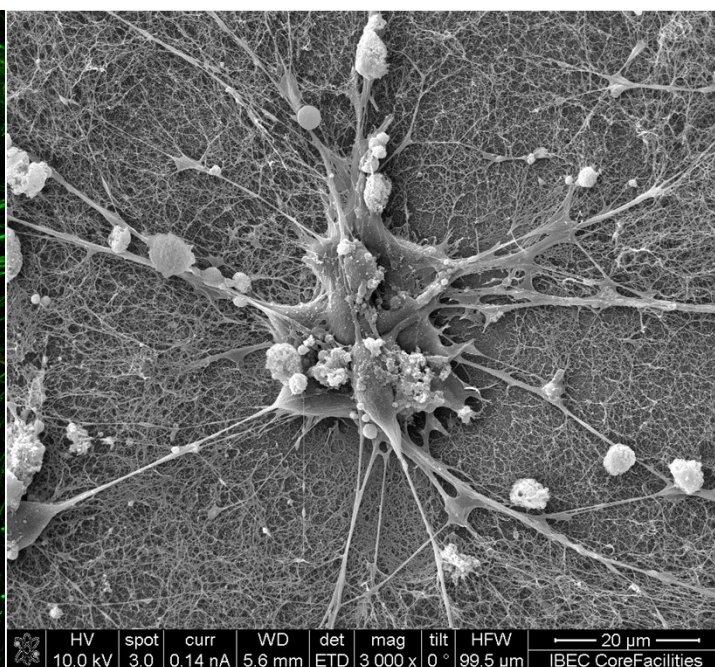
The combination of Confocal microscopy and Electron microscopy techniques provides a full picture of biological samples, allowing a deep analysis of the structures under study.

The Microscopy Characterization Facility is prepared to pre-treat these type of samples, according to technique requirements, to get the best results possible.

Confocal Microscopy:



Scanning Electron Microscopy:



Human Neuron cells on hydrogel matrixes made from Nanofibers. Samples provided by Dr. Zaida Álvarez, leader of the Biomaterials for Neuronal Regeneration group of IBEC.

➤ Fluorescence labels on the image correspond to Motor neurons in green (ChAT), Neurites in red (MAP2) and Nuclei in blue (DAPI).

➤ High resolution image where cells and nanofibers, from the hydrogel matrix, can be observed.